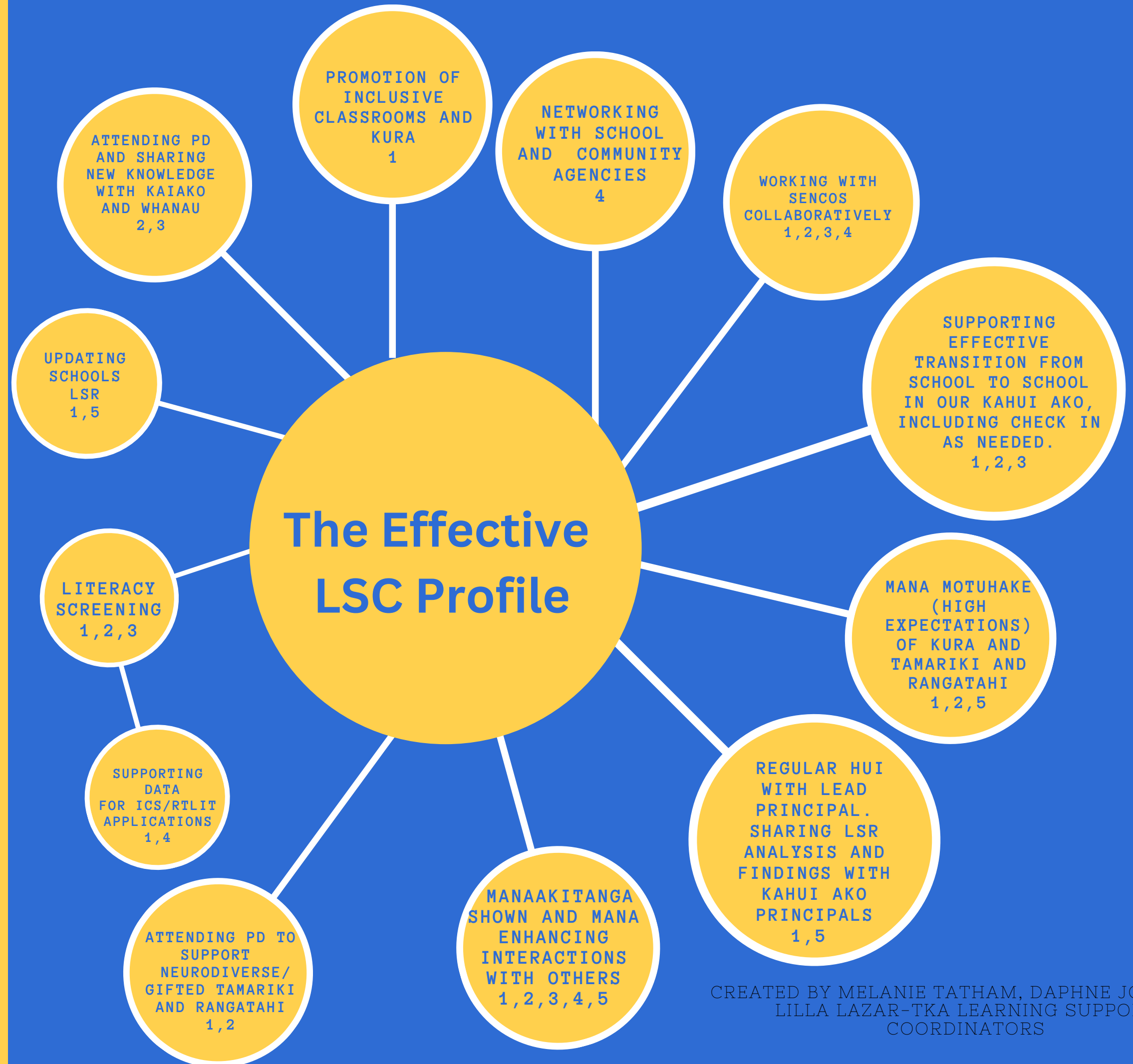


THE EFFECTIVE LSC PROFILE

The five functions of a LSC;

1. Support students through building an inclusive school or kura and cluster environment where all students participate, progress and make successful transitions.
2. Support kaiako/teachers in schools and kura to lift their capability to better meet the needs of learners, and to strengthen their connections with early learning services.
3. Support for parents and whānau to partner successfully with their school or kura and develop an understanding of learning support processes and who to contact if needed.
4. Work with other LSCs across the cluster, and connect with the Learning Support Facilitator and wider agencies, such as Oranga Tamariki—Ministry for Children, to access services and resources to support learners.
5. Work with and influence the school or kura leadership team to ensure all students receive the appropriate support to enhance their learning and progress.



CREATED BY MELANIE TATHAM, DAPHNE JOHN AND LILLA LAZAR-TKA LEARNING SUPPORT COORDINATORS